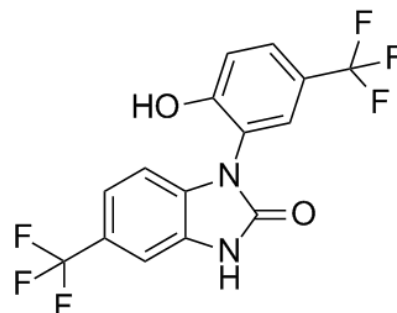


**Product Name** : NS-1619  
**Cat. No.** : PC-43063  
**CAS No.** : 153587-01-0  
**Molecular Formula** : C<sub>15</sub>H<sub>8</sub>F<sub>6</sub>N<sub>2</sub>O<sub>2</sub>  
**Molecular Weight** : 362.2267  
**Target** : Potassium Channel  
**Solubility** : DMSO: ≥ 31 mg/mL



## Biological Activity

NS-1619 (NS1619) is a selective large-conductance Ca(2+)-dependent K<sup>+</sup> channel (**BKCa** channel) activator with EC<sub>50</sub> of 3.6 μM.

NS-1619 activates the large-conductance Ca(2+)-dependent K<sup>+</sup> channel (BKCa) in membrane patches isolated from rat ventromedial hypothalamic neurones at <30 μM, does not activate ATP-K<sup>+</sup> channels.

NS-1619 concentration-dependently inhibits spontaneous activity in rat portal vein at 3-100 μM, activates the large conductance, Ca<sup>2+</sup>-sensitive channel, BKca and over the same concentration range it inhibits both KV and L-type Ca-channels.

## References

- Sellers AJ, et al. *Br J Pharmacol*. 1994 Nov;113(3):659-61.  
Olesen SP, et al. *Eur J Pharmacol*. 1994 Jan 4;251(1):53-9.  
Edwards G, et al. *Br J Pharmacol*. 1994 Dec;113(4):1538-47.  
Lee K, et al. *Eur J Pharmacol*. 1995 Jul 4;280(2):215-9.

**Caution: Product has not been fully validated for medical applications. Lab Use Only!**

E-mail: tech@probechem.com